

Raman Spectroscopy for Reaction Advancement Monitoring

Amy J. Ray Bauer, Ph.D., Principal Applications Scientist



Application Note

KEYWORDS

- Epoxide groups
- Reaction completion
- QE *Pro-Raman+* spectrometer

TECHNIQUES

- Raman spectroscopy

APPLICATIONS

- Reaction monitoring
- Kinetics analysis
- Materials analysis

Epoxy is a general term referring to epoxy resins, both the individual components and the cured results. Epoxy resins are a family of reactive polymer precursors and polymers that include epoxide groups. These resins are used in an extensive array of consumer and engineering applications because of their durability, strong adhesion, chemical resistance, and other specialized properties.

Epoxy resins are used in the manufacture of adhesives, plastics, paints, coatings, primers and sealers, flooring and other products and materials that are used in building and construction applications. Most materials known as “structural” or “engineering” adhesives are epoxies. These high-performance adhesives are used to make laminated woods for decks, walls, roofing and for other products that require strong bonds to a variety of substrates including concrete and wood. Epoxies can stick to metal, glass, stone, wood and some plastics, and are more heat- and chemical-resistant than most glues.

However, all these properties are contingent on proper proportions and mixing. In this application note, we use a readily available two-part epoxy as a model system for monitoring the kinetics and reaction completion of industrial processes, generally, and adhesive curing, specifically.

Experimental Setup

The two-part epoxy used in this demonstration, Devcon® 15 Minute Epoxy, is composed of bisphenol A diglycidyl ether resin and a polymercaptan/polyamine mixture (2,4,6-tri-(dimethylaminomethyl)-phenol and mercaptan amine blend). Mercaptan is an organo-sulfur compound that donates a thiol group to the curing process. Thiols react readily with the epoxide group and are typically used where heat cures are not possible, or a fast cure is needed.

To monitor the curing process, we used an Ocean Insight QE Pro-Raman+ with a 300 mW, 785 nm laser (LASER-785-LAB-ADJ-FC) and a Raman probe (RIP-RPB-785-FC-SMA) suspended at a fixed distance over the curing epoxy. Ambient light was excluded from the laser-sample interaction region with a black cloth. Raman signals were acquired with 3 s acquisition time and 10x averaging. Signals were acquired on the epoxy samples immediately upon mixing and then in 2-3 minute intervals after that. In some cases, signals were acquired the following day, but in no instance did these signals vary appreciably from those collected at 40-45 minutes after mixing.

Measurements

Two samples of different proportions of resin and hardener were mixed, at the recommended ratio of 1:1 and at a 2:1 hardener-to-resin mixture. Following the mixing of the two components, the curing process was monitored with Raman spectroscopy. The analytical focus was principally on the epoxide and thiol features, which diminish upon curing.

Raman bands corresponding to epoxide vibrational frequencies have been reported previously [1], with 1254 cm^{-1} assigned to be the breathing mode of the epoxide ring (Figure 1). The intensity of this peak is linearly dependent on the concentration of epoxide groups in the resin mixture [1 and references therein]. The peak at 921 cm^{-1} is likely the epoxide ring deformation and is much weaker. The Raman peaks at 1114 cm^{-1} , 1186 cm^{-1} and 1610 cm^{-1} have been assigned to resin backbone vibrations and do not change in intensity during the curing reaction.

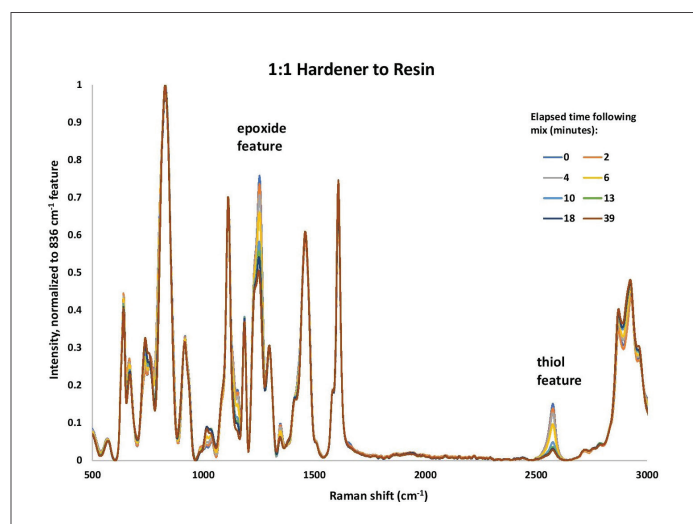


Figure 1. Devcon® 15 Minute Epoxy (1:1 resin to hardener), as a function of cure times (minutes).

The change of the 1254 cm^{-1} feature with time can be interpreted as the consumption of the free epoxide groups during the vitrification of the epoxy. The reduction of the intensity of the Raman feature at 2575 cm^{-1} shows the consumption of the thiol in the hardener as the material reacts. The rate of the initial loss of the S-H feature appears to be a function of the initial concentration of the hardener.

The S-H stretch, related to the presence of thiol, is readily observed at 2575 cm^{-1} . In the case of the measurement of 1:1 hardener-to-resin, the S-H

feature is still present when the curing process stops. Note that this sample was still slightly sticky to the touch the next day, far after the 15 minute cure time assured on the package. This result could be due to either the incorrect proportions of the two substances or perhaps inadequate mixing of the two.

In the 2:1 hardener-to-resin sample, the initial peak of the thiol feature is slightly higher than in the 1:1 case (Figure 2). This was not evaluated for quantitative behavior, but the ratios of peak heights seem reasonable given that in the 2:1 case, the hardener accounts for 67% of the total material present (two-thirds) and in the 1:1 case, only 50% (one-half). In this second case, there is not enough resin to react stoichiometrically with the available resin, and there is an appreciable amount of thiol remaining in the product epoxy. It is not surprising that the epoxy did not cure well in this case, either.

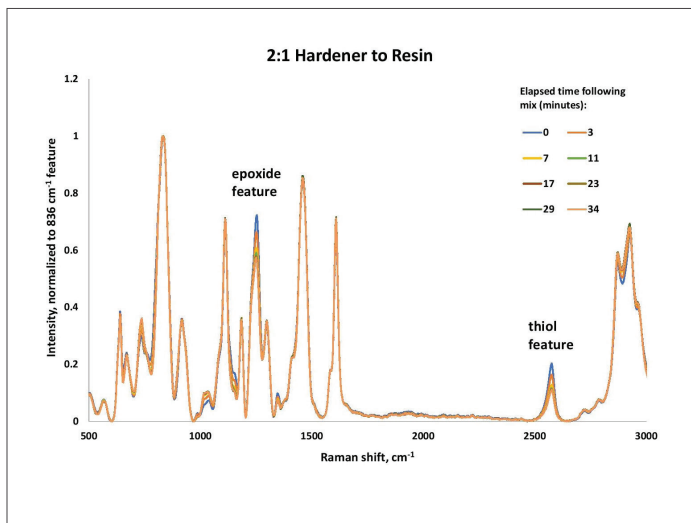


Figure 2. Devcon® 15 Minute Epoxy (1:2 resin to hardener), as a function of cure times (minutes).

The S-H feature (analyzed using peak area from 2487-2639 cm^{-1}) in the case of the 2:1 mix comprises about 1.36x more integrated area than that associated with the 1:1 mix. This agrees with the

fact that in the 1:1 mix, there is 50% hardener. In the 2:1, there is 67% hardener (a 1.34x increase).

The 2:1 mixture has an appreciable amount of S-H remaining; 1:1 has less S-H remaining at the end of the cure.

Kinetics Analysis

A kinetic analysis of the S-H loss is readily performed on the data produced with the Ocean Insight Raman system.

Behavior as a function of time of the S-H feature is shown in Figure 3. A visual comparison of the two data traces (markers) shows that first, there is more S-H at the beginning of the process in the case of the 2:1 hardener-to-resin mix than in the 1:1 case.

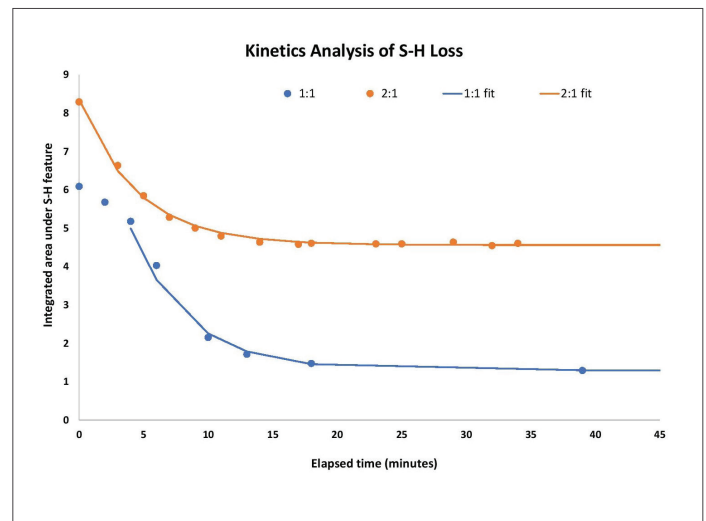


Figure 3. Integrated areas under the S-H feature in both the described cases; also, the exponential fits to the data.

Additionally, the data markers show that onset of the reaction is slightly accelerated when excess hardener is present. Fitting the data in the region where S-H reactivity is the fastest (excluding the first three points in the 1:1 case) to a simple



exponential with an offset (eq. 1), it is apparent that the kinetics of the bulk of the reaction are the same in both mixtures with τ (1/e half-life) of 4.5 minutes. Finally, it is also clear from the tail of both sets of data (markers) that more unreacted S-H remains in the case where more hardener has been added, which is reasonable because the hardener is the source of the thiol.

$$\text{Equation 1. } y = y_0 + A * \exp\left(\frac{-(x-x_0)}{\tau}\right)$$

Summary

This brief application note details the use of Raman spectroscopy to elucidate details of the epoxy curing process in real time. This utility can be easily extended to other types of reactive processes, even those that are faster than this relatively slow epoxy vitrification. Ocean Insight supports a line of Raman spectrometers and lasers that are ideal to perform this type of analysis, and the applications expertise to help you solve similar problems.

References

1. Křesálek, V. and H. Vašková, "Raman spectroscopy of epoxy resin crosslinking," Recent Researches in Automatic Control, Conference Paper, May 2011.



www.oceaninsight.com

info@oceaninsight.com • **US** +1 727-733-2447

EUROPE +31 26-3190500 • **ASIA** +86 21-6295-6600