

# ADC1000-USB A/D Converter Operating Instructions

Rev. 2.03

05062005

**Offices:** **Ocean Optics, Inc.**

830 Douglas Ave., Dunedin, FL, USA 34698

Phone 727.733.2447

Fax 727.733.3962

8:30 a.m.-6 p.m. EST

**Ocean Optics B.V. (Europe)**

Nieuwgraaf 108 G, 6921 RK DUIVEN, The Netherlands

Phone 31-(0)26-3190500

Fax 31-(0)26-3190505

---

<b>E-mail:</b>	<a href="mailto:Info@OceanOptics.com">Info@OceanOptics.com</a>	(General sales inquiries)
	<a href="mailto:Info@OceanOpticsBV.com">Info@OceanOpticsBV.com</a>	(European sales inquiries)
	<a href="mailto:Orders@OceanOptics.com">Orders@OceanOptics.com</a>	(Questions about orders)
	<a href="mailto:TechSupport@OceanOptics.com">TechSupport@OceanOptics.com</a>	(Technical support)

**Copyright © 2005 Ocean Optics, Inc.**

All rights reserved. No part of this publication may be reproduced, stored in a retrieval system, or transmitted, by any means, electronic, mechanical, photocopying, recording, or otherwise, without written permission from Ocean Optics, Inc.

This manual is sold as part of an order and subject to the condition that it shall not, by way of trade or otherwise, be lent, re-sold, hired out or otherwise circulated without the prior consent of Ocean Optics, Inc. in any form of binding or cover other than that in which it is published.

**Trademarks**

Microsoft, Windows, Windows 95, Windows 98, Windows Me, Windows NT, Windows 2000, Windows XP and Excel are either registered trademarks or trademarks of Microsoft Corporation.

**Limit of Liability**

Every effort has been made to make this manual as complete and as accurate as possible, but no warranty or fitness is implied. The information provided is on an "as is" basis. Ocean Optics, Inc. shall have neither liability nor responsibility to any person or entity with respect to any loss or damages arising from the information contained in this manual.

## Table of Contents

---

<b>1</b>	<b>Overview .....</b>	<b>1</b>
	<b>Interface Options .....</b>	<b>1</b>
	USB Port .....	2
	Serial Port .....	2
<b>2</b>	<b>Using the ADC1000-USB .....</b>	<b>3</b>
	<b>USB Port Overview .....</b>	<b>3</b>
	Interface the ADC1000-USB to the Spectrometer .....	3
	Install the OOIBase32 Software .....	4
	Connect the ADC1000-USB to your USB Port.....	4
	Configure the OOIBase32 Software – USB Port.....	4
	Configuring the Spectrometer .....	5
	Setting OOIBase32 Parameters.....	6
	Configuring Data Acquisition.....	7
	Saving Wavelength Calibration Coefficients: USB Mode.....	7
	<b>Serial Port Overview .....</b>	<b>9</b>
	Connect the ADC1000-USB to your Serial Port.....	9
	Install the OOIBase32 Software .....	10
	Configure the OOIBase32 Software – Serial Port.....	10
	Configuring the Spectrometer .....	12
	Setting OOIBase32 Parameters.....	13
	Configuring Data Acquisition.....	13
	Saving Wavelength Calibration Coefficients: Serial Mode.....	14
	<b>ADC1000-USB-S Notes.....</b>	<b>15</b>
	ADC1000-USB-S Rear Panel .....	15
<b>3</b>	<b>Troubleshooting.....</b>	<b>16</b>
	Troubleshooting Device Driver Installation.....	16
	An Older Version of OOIBase32 is Installed on the PC.....	19
	Software and Hardware are not Synchronized .....	19
	Serial Port Number is Unclear.....	20
<b>4</b>	<b>Spectroscopic Accessories .....</b>	<b>21</b>
	<b>Recommended Accessories.....</b>	<b>21</b>
	<b>Appendix 1 – Specifications .....</b>	<b>22</b>
	<b>ADC1000-USB Specifications.....</b>	<b>22</b>
	<b>Pinouts.....</b>	<b>23</b>
	15-pin Accessory Connector Pinouts .....	23
	9-pin Serial Connector Pinouts .....	23
	<b>Index.....</b>	<b>24</b>

# 1 Overview

The ADC1000-USB External USB A/D Converter is a plug-and-play high-speed analog-to-digital (A/D) converter designed for hassle-free instrument-to-PC interfacing. An A/D converter is necessary to interface all Ocean Optics spectrometers to PCs.

## Interface Options

---

The ADC1000-USB can interface to external devices via the USB port or the Serial port. The following table details requirements for external devices:

<b>Device / Interface Method</b>	<b>Operating System Requirements</b>	<b>Cable</b>	<b>Cable Description</b>
Desktop or Notebook PC via USB Port	Windows 98/Me/2000/XP	USB Cable (included)	Cable connects from USB port on ADC1000-USB to USB port on desktop or notebook PC
Desktop or Notebook PC via Serial Port	Any 32-bit Windows operating system	Serial Cable ADC-USB-SER (not included)	Cable connects from serial port on ADC1000-USB to serial port on desktop or notebook PC; comes with 5 VDC power supply required when ADC1000-USB interfaces via the serial port

## **ADC1000-USB Overview**

---

### **USB Port**

The ADC1000-USB interfaces an S2000 Spectrometer to a notebook or desktop PC via a USB port. When interfaced to a PC via the USB port, the ADC1000-USB does not require an external power supply -- it draws its power from the PC to which it is connected.

The ADC1000-USB can connect via the USB port to any PC that uses a Windows 98/Me/2000/XP operating system and has OOIBase32 installed and configured for use with your ADC1000-USB. If multiple PCs meet these two qualifications, you can switch your ADC1000-USB and spectrometer among them.



*The ADC1000-USB connects to the back of an S2000 Spectrometer and interfaces to a notebook computer via the USB port and USB cable.*

### **Serial Port**

The ADC1000-USB also has a serial port for interfacing the S2000 or S1024DW Spectrometer to PCs, PLCs and other devices that support the RS-232 communication protocol.

## 2 Using the ADC1000-USB

The following sections provide instruction on configuring and using the ADC1000-USB via the USB port:

### USB Port Overview

---

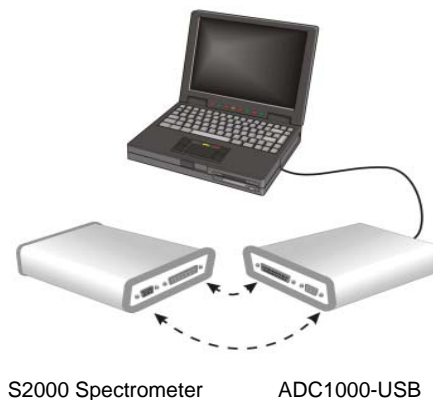
**Note:** To use the USB port on the ADC1000-USB, the PC to which you are connecting must run either the Windows 98, Windows ME, Windows 2000, or Windows XP operating systems.

USB connectivity is not available on Windows 95 or Windows NT systems.

---

### Interface the ADC1000-USB to the Spectrometer

If you ordered your S2000 Spectrometer and ADC1000-USB A/D Converter at the same time, the spectrometer and the A/D converter should share one housing (see the *ADC1000-USB-S Notes* section in this chapter). However, if you already owned a spectrometer and then purchased the ADC1000-USB separately, you must connect the ADC1000-USB to the back of the spectrometer. The picture below illustrates this connection:



**Note:** Do not connect the ADC1000-USB to the PC at this time. You must install the OOIBase32 software first. If you connected the ADC1000-USB to your PC before you installed OOIBase32, you will NOT be able to use your spectrometer. See the *Troubleshooting* section for more information.

---

## Using the ADC1000-USB: USB Mode

---

### Install the OOIBase32 Software

Consult your OOIBase32 documentation for instructions on installing OOIBase32.

### Connect the ADC1000-USB to your USB Port

The USB port on the PC will supply sufficient power to the ADC1000-USB only if the ADC1000-USB is connected to 5 or fewer spectrometer channels. If the ADC1000-USB is connected to more than 5 spectrometer channels, you will need an external power supply

Follow the steps below to connect the ADC1000-USB to the computer:

1. Locate the USB cable packaged with the ADC1000-USB.
2. Insert the square end of the cable into the side of the ADC1000-USB. Insert the flat rectangular end of the cable into a USB port on your PC.

If you installed OOIBase32 correctly, the **Add New Hardware Wizard** message appears. The driver (provided during the OOIBase32 installation) should automatically install.

---

**Note:** Wait 5-10 seconds between connecting the ADC1000-USB to the computer and starting the OOIBase32 software.

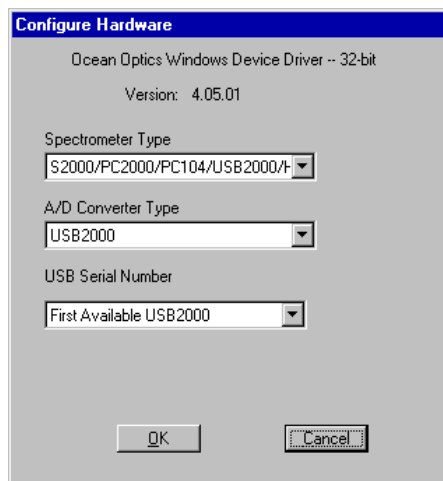
---

### Configure the OOIBase32 Software – USB Port

You will need to configure OOIBase32 before using the ADC1000-USB and your spectrometer. For details on using OOIBase32, consult the *OOIBase32 Spectrometer Operating Software Manual*, which can be found on the *Software and Technical Resources* CD and the Ocean Optics web site.

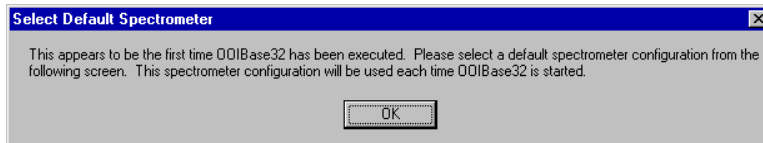
The following steps provide instruction on starting and configuring the OOIBase32 software with the ADC1000-USB:

1. Select **Start > Programs > Ocean Optics > OOIBase32** and click on the OOIBase32 icon. If you are configuring OOIBase32 for the first time, the Configure Hardware screen appears:



## Using the ADC1000-USB: USB Mode

2. Select **S2000/PC2000/USB2000/HR2000** from the Spectrometer Type drop-down menu. Select **ADC1000-USB** from the A/D Converter Type drop-down menu. Select your ADC1000-USB from the USB Serial Number drop-down menu. Then, click the **OK** button. The User Name and Serial Number screen appears.
3. Enter a user name and software serial number, and then click the **Next** button. The Select Default Spectrometer Message appears:



4. Click the **OK** button. The Default Spectrometer Configuration screen appears.
5. Go to the OOIBase32 installation directory and select the file named **XXX.spec**, where **XXX** represents the serial number of your ADC1000-USB. Then, click the **OK** button.

**Note:** You will typically only set the parameters in this screen once -- when OOIBase32 is first installed and the software first opens. However, you can access this configuration screen at any time by selecting **Configure > Hardware** from the menu bar.

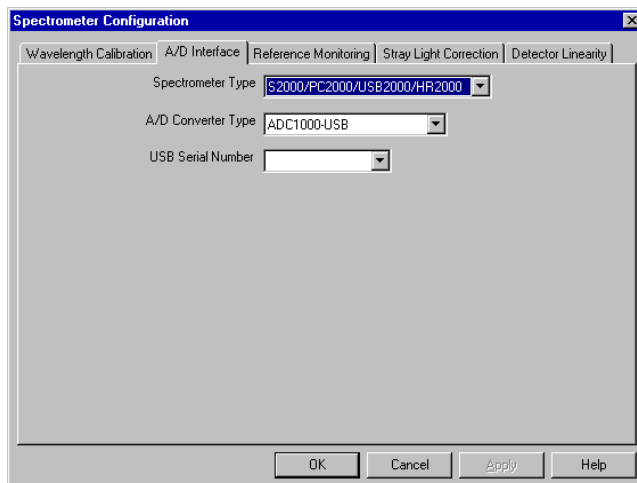
The system should now be configured to acquire data and respond to light. If you encounter problems, exit and restart the OOIBase32 program.

## Configuring the Spectrometer

The following section provides information on configuring your spectrometer and setting system parameters:

### Open the Spectrometer Configuration Screen

Select **Spectrometer > Configure** from the menu bar. The Spectrometer Configuration screen appears:





## Using the ADC1000-USB: USB Mode

---

### Wavelength Calibration Tab

If your spectrometer and ADC1000-USB were packaged together, the displayed coefficients are read from a memory chip on the ADC1000-USB.

The numbers in the Wavelength Calibration tab must match the coefficients from the Wavelength Calibration Data Sheet that came with your spectrometer. If these numbers differ, copy the coefficients that are on the floppy diskette that you received with your spectrometer to your hard drive, or manually enter the values from the Wavelength Calibration Data Sheet and click the **Write to ADC1000USB** button.

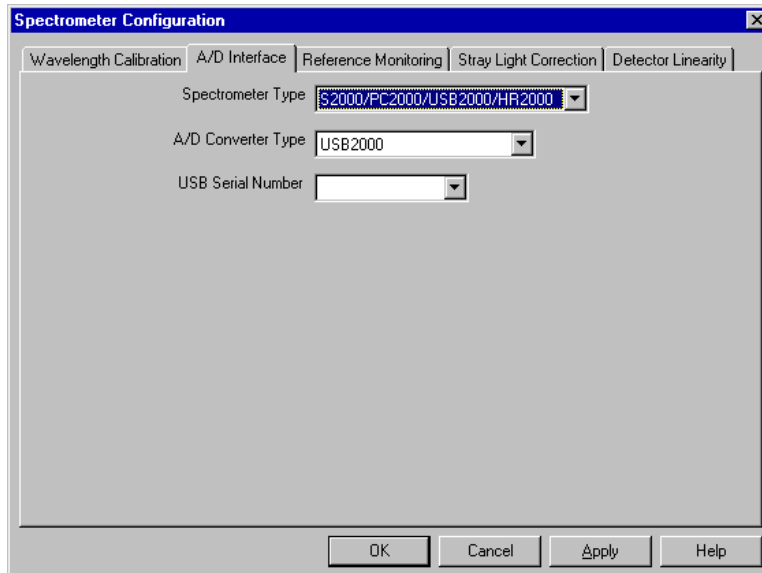
---

**Note:** You can also update the Wavelength Calibration Coefficients using the USB Programmer.

---

### A/D Interface Tab

Enter the same values as you did in the Configure Hardware dialog box (see the *Configure the OOIBase32 Software – USB Port* section for more information).



When you exit OOIBase32, this data is stored in the **.spec** file.

### Setting OOIBase32 Parameters

Select **Edit > Settings** from the OOIBase32 menu bar to open the OOIBase32 Settings screen.

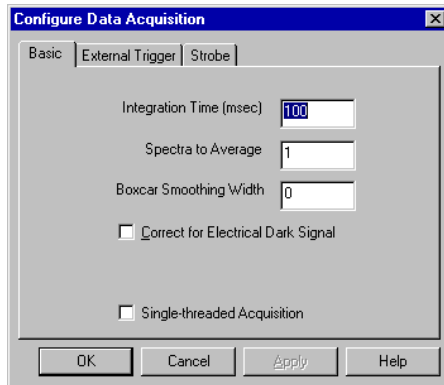
From this screen, you can configure the following items:

- Configure options for saving, opening, and printing data
- Associate .WAV sounds with various program events
- Configure default-setting files
- Store data
- Copy data
- Configure warning messages

## Using the ADC1000-USB: USB Mode

### Configuring Data Acquisition

Select **Spectrum > Configure Data Acquisition** from the OOIBase32 menu bar to open the Configure Data Acquisition screen.



From this screen, you can configure your data acquisition parameters such as integration time, averaging, boxcar smoothing, and several other parameters.

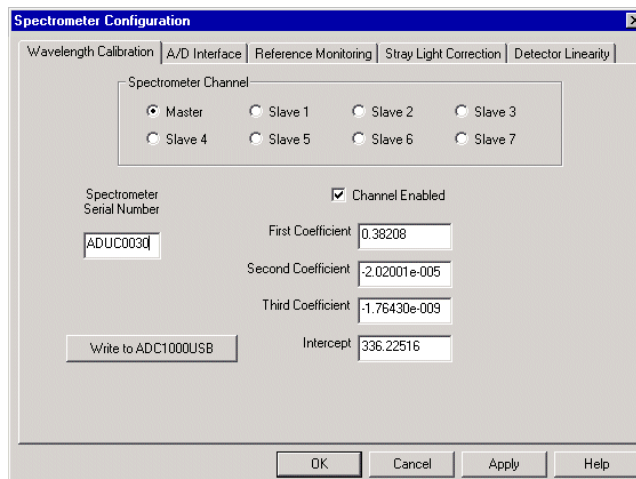
### Saving Wavelength Calibration Coefficients: USB Mode

You can store wavelength calibration coefficients unique to your S2000 Spectrometer on an EEPROM memory chip on the ADC1000-USB. Once they are stored in memory, OOIBase32 reads the wavelength calibration coefficients. This feature is only available when using the ADC1000-USB via the USB port.

**Note:** If you are using the ADC1000-USB via the serial port, proceed to the *Saving Wavelength Calibration Coefficients: Serial Mode* section.

Perform the following steps to save wavelength calibration coefficients using the USB mode:

1. Make sure that the S2000 Spectrometer and ADC1000-USB are connected to your PC.
2. Open OOIBase32 and select **Spectrometer > Configure** from the menu bar.



(Continued)

### ***Using the ADC1000-USB: USB Mode***

---

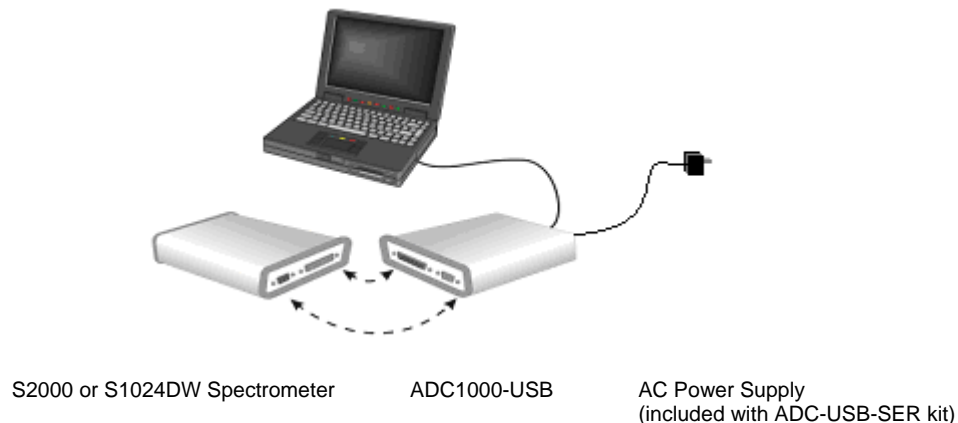
3. Select the **Wavelength Calibration** tab.
4. Enter in the values you acquired from Steps 5-6 in the *Calibrating the Wavelength of the Spectrometer* section.
5. Click on the **Write to ADC1000USB** button, then click the **OK** button.

## **Serial Port Overview**

---

### **Interface the ADC1000-USB to the Spectrometer**

If you ordered your S2000 or S1024DW Spectrometer and ADC1000-USB A/D Converter at the same time, the spectrometer and the A/D converter should share one housing (see the *ADC1000-USB-S Notes* section in this chapter). However, if you already owned a spectrometer and then purchased the ADC1000-USB separately, you must interface the ADC1000-USB to the back of the spectrometer. The picture below illustrates this connection:



### **Connect the ADC1000-USB to your Serial Port**

To use the serial port on the ADC1000-USB, the PC to which it is interfacing must have a 32-bit Windows operating system.

Follow the steps below to connect the ADC1000-USB to the computer via the serial port:

1. Connect one end of the serial cable to the ADC1000-USB and the other end of the serial cable to a serial port on your PC.
2. Note the serial port number (also called COM Port) on the PC to which you are interfacing. Some PCs may not have numbered ports.
3. Plug the power supply into an electrical outlet and connect it to the ADC1000-USB.

## Install the OOIBase32 Software

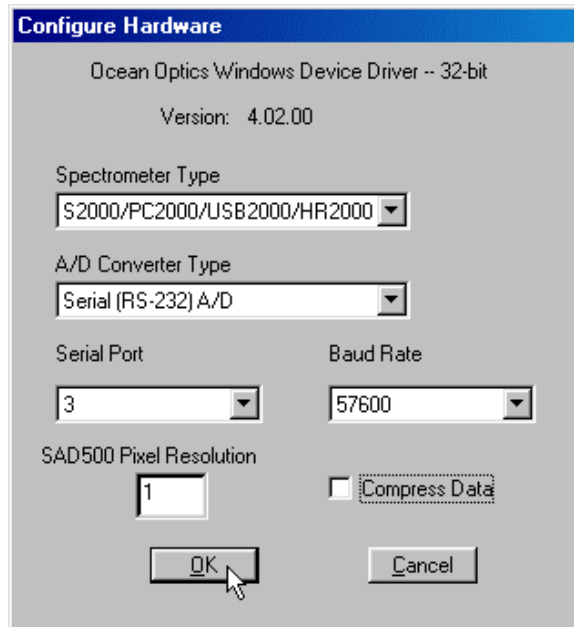
Consult your OOIBase32 documentation for instructions on installing OOIBase32.

## Configure the OOIBase32 Software – Serial Port

You will need to configure OOIBase32 before using the ADC1000-USB and your spectrometer. For details on using OOIBase32, consult the *OOIBase32 Spectrometer Operating Software Manual*, which can be found on the *Software and Technical Resources* CD and the Ocean Optics website.

The following steps provide instruction on starting and configuring the OOIBase32 software with the ADC1000-USB:

1. Select **Start > Programs > Ocean Optics > OOIBase32** and click on the OOIBase32 icon. If you are configuring OOIBase32 for the first time, the Configure Hardware screen appears:



2. Select **S2000/PC2000/USB2000/HR2000** from the Spectrometer Type drop-down menu if you are interfacing the ADC1000-USB to an S2000 Spectrometer. Select **S1024DW** if you are interfacing to an S1024DW Spectrometer.
3. Select **Serial (RS-232) A/D** from the A/D Converter Type drop-down menu.
4. Select your ADC1000-USB from the USB Serial Number drop-down menu. Then, click the **OK** button. The User Name and Serial Number screen appears.
5. Choose the COM port number your computer is using to interface to your ADC1000-USB from the Serial Port drop-down menu. Consult the *Troubleshooting* chapter for more assistance in determining the COM port, if necessary.
6. Select the operation speed of the ADC1000-USB from the Baud Rate drop-down menu. You should typically select 115,200 baud.

(Continued)

## Using the ADC1000-USB: Serial Mode

---

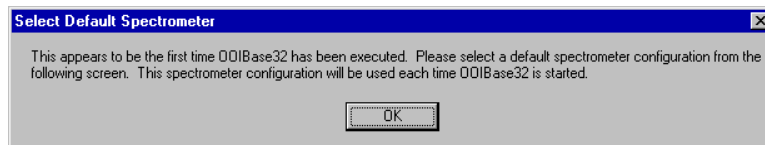
7. Enter a value from 1-500 in the Pixel Resolution text box.

This value specifies that every  $n^{\text{th}}$  pixel of the spectrometer will transmit from the ADC1000-USB to the PC. Sacrificing resolution equates to an increase in speed. The transfer of one complete spectra requires approximately 0.3 seconds at 115,200 baud. If you need information more frequently than 0.3 seconds per spectra, increase the resolution or enable data compression (see Step 8).

8. Select the Compress Data check box to enable the **Compress Data** function.

This option minimizes the amount of data transferred over the RS-232 connection. As transmission of spectral data over the serial port is a relatively slow process, enabling this function compresses every scan transmitted by the ADC1000-USB. This greatly increases the data transfer speed of the ADC1000-USB.

6. Click the **OK** button. The User Name and Serial Number screen appears.
7. Enter a user name and software serial number, and then click the **Next** button. The Select Default Spectrometer Message appears:



8. Click the **OK** button. The Default Spectrometer Configuration screen appears.
9. Go to the OOIBase32 installation directory and select the file named **XXX.spec**, where XXX represents the serial number of your ADC1000-USB. Then, click the **OK** button.

---

**Note:** You will typically only set the parameters in this screen once -- when OOIBase32 is first installed and the software first opens. However, you can access this configuration screen at any time by selecting **Configure > Hardware** from the menu bar.

---

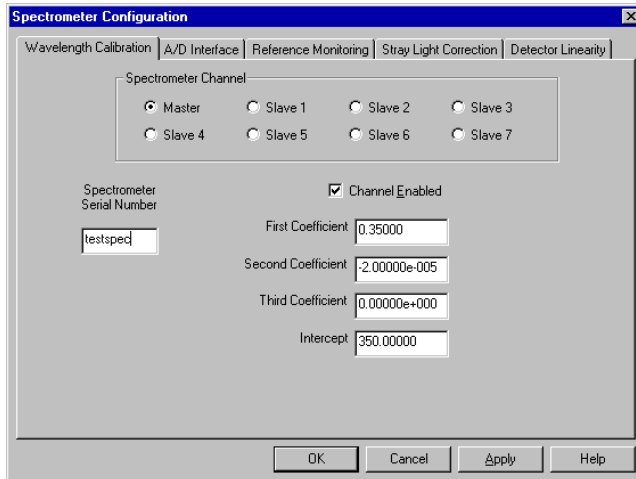
## Using the ADC1000-USB: Serial Mode

### Configuring the Spectrometer

The following section provides information on configuring your spectrometer and setting system parameters:

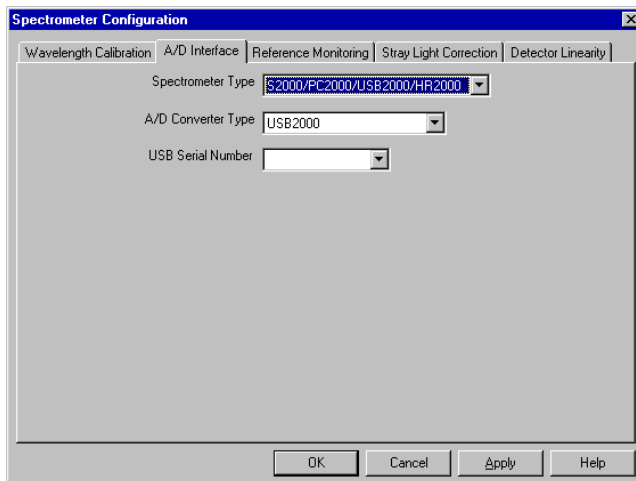
#### Open the Spectrometer Configuration Screen

Select **Spectrometer > Configure** from the menu bar. The Spectrometer Configuration screen appears:



#### A/D Interface Tab

Enter the same values as you did in the Configure Hardware dialog box (see the *Configure the OOIBase32 Software – Serial Port* section for more information).



When you exit OOIBase32, this data is stored in the **.spec** file.

## Setting OOIBase32 Parameters

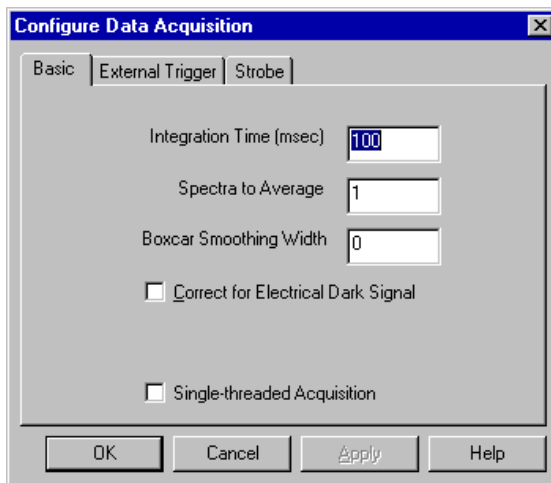
Select **Edit > Settings** from the OOIBase32 menu bar to open the OOIBase32 Settings screen.

From this screen, you can configure the following items:

- Configure options for saving, opening, and printing data
- Associate .WAV sounds with various program events
- Configure default-setting files
- Store data
- Copy data
- Configure warning messages

## Configuring Data Acquisition

Select **Spectrum > Configure Data Acquisition** from the OOIBase32 menu bar to open the Configure Data Acquisition screen.



From this screen you can configure your data acquisition parameters such as integration time, averaging, boxcar smoothing, and several other parameters.



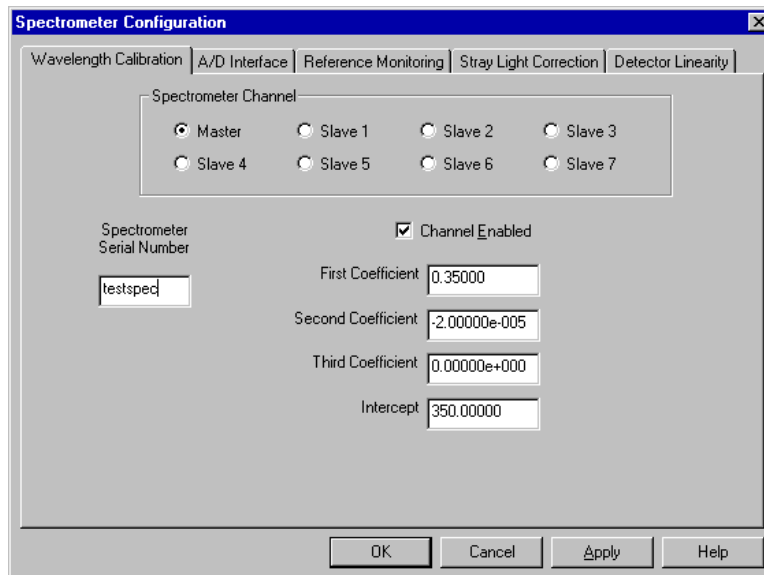
## Saving Wavelength Calibration Coefficients: Serial Mode

If you are interfacing the S2000 Spectrometer or S1024DW Spectrometer to your PC via the serial cable, you need to save the wavelength calibration coefficients to the .spec file that OOIBase32 accesses each time it opens.

**Note:** You cannot save the calibration coefficients to the EEPROM memory chip on the ADC1000-USB when using the serial mode.

To save wavelength calibration coefficients using the serial mode:

1. Open OOIBase32 and select **Spectrometer > Configure** from the menu bar.



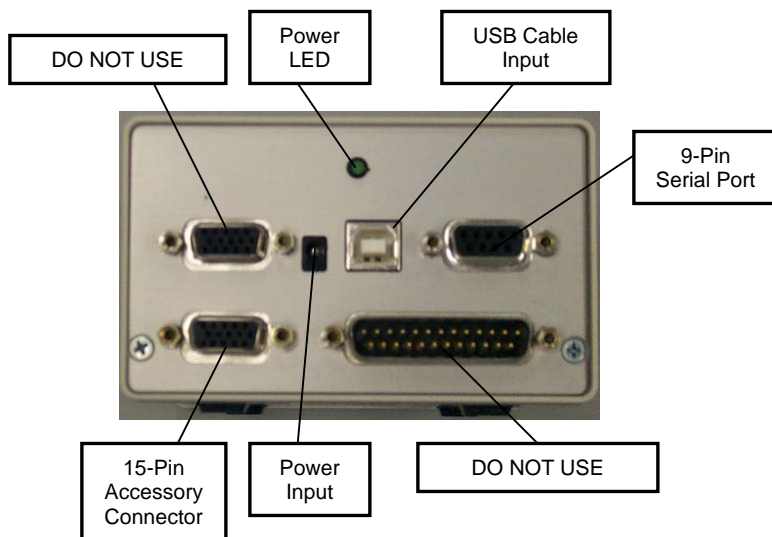
2. Choose the **Wavelength Calibration** tab to update the wavelength coefficients within OOIBase32.
3. Enter in the values you acquired from Steps 5-6 in the *Calibrating the Wavelength of the Spectrometer* section.
4. Click on the **Apply** button, then click the **OK** button.

## ADC1000-USB-S Notes

The ADC1000-USB-S does not function any differently from the ADC1000-USB. However, there are configuration notes specific to the ADC1000-USB-S that you must follow when using the ADC1000-USB-S.

### ADC1000-USB-S Rear Panel

The following image illustrates the rear panel of the ADC1000-USB-S A/D converter:



Ensure that you do not use the upper 15-pin accessory connector or the 25-pin ADC connector on the back of the ADC1000-USB-S. Using these ports may result in invalid data being returned to your spectrometer.

### Power Input Specifications

When using the ADC1000-USB-S in USB mode, you do not need to connect an external 5V power source as long as your spectrometer has 4 channels or less. However, if your spectrometer has 5 or more channels, you will need to use an external 5V power source, as the USB cable cannot deliver enough power to accommodate all channels.

## 3 Troubleshooting

The following sections contain information on resolving some of the most common problems encountered when using the ADC1000-USB:

### Troubleshooting Device Driver Installation

**Issue:**

After connecting the ADC1000-USB to the PC, the Add New Hardware Wizard does not locate a device driver for the ADC1000-USB. Ultimately, a message appears stating that Windows has not installed a device driver.

**Probable Cause:**

You connected the ADC1000-USB to the PC prior to completing the OOIBase32 software installation. The ADC1000-USB driver is installed as part of the OOIBase32 package. If you connect the device to the computer prior to installing OOIBase32, no device driver will be available for the ADC1000-USB.

**Resolution:**

Follow the applicable steps below to remove the incorrectly installed device, device driver, and installation files.

---

**Note:** If these procedures do not correct your device driver problem, you will need to obtain the "Correcting Device Driver Issues" document from the document library located at <http://www.oceanoptics.com/technical/engineering/>

---

#### Remove the Unknown Device from Windows Device Manager

1. Open Windows Device Manager as follows:

**Windows 98/Me:**

- Go to the desktop and right-click on **My Computer**.
- Select **Properties** from the pop-up menu.
- Click on the **Device Manager** tab.

**Windows 2000/XP:**

- Click **Start | Settings | Control Panel | System**.
- Select the **Hardware** tab.
- Click on the **Device Manager** button.

(Continued)

## Troubleshooting

---

(Remove Unknown Device from Device Manager Continued)

2. Locate the **Other Devices** option and expand the Other Devices selection by clicking on the "+" sign to the immediate left.

---

**Note:** Improperly installed USB devices may also appear under the Universal Serial Bus Controller option. Be sure to check this location if you cannot locate the unknown device.

---

3. Locate the unknown device (marked with a large question mark). Right-click on the **Unknown Device** listing and select the **Uninstall** or **Remove** option.
4. Click the **OK** button to continue. A warning box appears confirming the removal of the Unknown Device. Click the **OK** button to confirm the device removal.
5. Detach the ADC1000-USB from your computer.

### Remove Improperly Installed Files

---

#### Windows 98:

1. Open Windows Explorer.
2. Navigate to the **Windows | INF** directory. If the INF directory is not visible, you will need to disable the "Hide System Files and Folders" option on in Windows Folder Options.

---

**Note:** If the INF directory is not visible, you will need to disable the "Hide System Files and Folders" and "Hide File Extensions for Known File Types" options in Windows Folder Options.

---

You can access Windows Folder Options from Windows Explorer, under the **View | Options** menu selection.

---

3. Delete the **OOI\_USB.INF** file in the INF directory.
4. Navigate to the **Windows | System32 | Drivers** directory.
5. Delete the **EZUSB.SYS** file.
6. Reinstall your Ocean Optics application and reboot the system when prompted.
7. Plug in the ADC1000-USB.

The system will now be able to locate and install the correct drivers for the ADC1000-USB.

(Continued)

## Troubleshooting

---

(Remove Improperly Installed Files Continued)

### Windows 2000:

1. Open Windows Explorer.
2. Navigate to the **Windows | INF** directory. If the INF directory is not visible, you will need to disable the “Hide System Files and Folders” option on in Windows Folder Options.

---

**Note:** If the INF directory is not visible, you will need to disable the “Hide System Files and Folders” and “Hide File Extensions for Known File Types” options in Windows Folder Options.

You can access Windows Folder Options from Windows Explorer, under the **Tools | Folder Options** menu selection.

---

3. Delete the **OOI\_USB.INF** and **OOI\_USB.PNF** files in the INF directory.
4. Navigate to the **Windows | System32 | Drivers** directory.
5. Delete the **EZUSB.SYS** file.
6. Reinstall your Ocean Optics application and reboot the system when prompted.
7. Plug in the ADC1000-USB.

The system will now be able to locate and install the correct drivers for the ADC1000-USB.

### Windows XP:

1. Open Windows Explorer.
2. Navigate to the **Windows | INF** directory. If the INF directory is not visible, you will need to disable the “Hide System Files and Folders” option on in Windows Folder Options.

---

**Note:** If the INF directory is not visible, you will need to disable the “Hide System Files and Folders” and “Hide File Extensions for Known File Types” options in Windows Folder Options.

You can access Windows Folder Options from Windows Explorer, under the **View | Options** menu selection.

---

3. Delete the **OOI\_USB.INF** and **OOI\_USB.PNF** files in the INF directory.
4. Navigate to the **Windows | System32 | Drivers** directory.
5. Delete the **EZUSB.SYS** file.
6. Reinstall your Ocean Optics application and reboot the system when prompted.
7. Plug in the ADC1000-USB.

The system will now be able to locate and install the correct drivers for the ADC1000-USB.

---

**Note:** You can test to see if the ADC1000-USB is installed correctly by opening the USB Programmer. If the ADC1000-USB appears in the left pane of the USB Programmer window, the device is correctly installed and recognized.

---

## **Troubleshooting**

---

### **An Older Version of OOIBase32 is Installed on the PC**

**Issue:**

The PC you wish to use with the ADC1000-USB has an older version of OOIBase32 installed on it.

**Probable Cause:**

Not applicable.

**Resolution:**

Install the latest version of OOIBase32 from the Software and Technical Resources CD. Alternately, you can download the latest version from the Ocean Optics website at the following address:

<http://www.oceanoptics.com/technical/softwaredownloads.asp>

You do not need to uninstall the older version first.

### **Software and Hardware are not Synchronized**

**Issue:**

The software and hardware do not seem to be synchronized.

**Probable Cause:**

A variety of factors may have caused the hardware and software to fall out of synchronization.

**Resolution:**

To resolve synchronization problems:

1. Exit OOIBase32 software.
2. Cycle the power on the ADC1000-USB
3. Restart the OOIBase32 software.

### **Serial Port Number is Unclear**

**Issue:**

The serial port used by the ADC1000-USB is unclear, or the serial ports on the PC are not numbered.

**Probable Cause:**

Not Applicable

**Resolution:**

Follow the appropriate steps below for your operating system to identify the serial port number:

**Windows 95/98/Me**

- Right-click on **My Computer**
- Select **Properties**
- Click on the **Device Manager** tab

**Windows 2000/XP**

- Right-click on **My Computer**
- Select **Properties**
- Select the **Hardware** tab
- Click on the **Device Manager** button

**Windows NT**

- Click the **Start** button
- Select **Programs**
- Select **Administrative Tools (common) NT diagnostics.**

Double-click on **Ports (COM & LPT)** to display the COM port numbers. Ensure there is no yellow or red warning sign next to the COM Port you are attempting to use.

---

**Note:** If the ports on your PC are not labeled and you don't know the COM port you are using for your ADC1000-USB, you may have to resort to trial and error. If you choose the wrong serial port number, you will not see a dynamic trace responding to light near the bottom of the displayed graph. Instead, you will see a straight line at 0 counts.

---

## 4 Spectroscopic Accessories

To find operating instructions on products such as light sources, sampling chambers, probes, fibers or any other of our spectroscopic accessories, check the *Software and Technical Resources* CD or our web site at [www.OceanOptics.com/Technical/OperatingInstructions.asp](http://www.OceanOptics.com/Technical/OperatingInstructions.asp).

### Recommended Accessories

---

The following accessories are recommended for use with the ADC1000-USB A/D Converter:

Product Code	Description	Link
ADC-USB-SER	Serial Cable and Power Supply kit for use with ADC1000-USB	<a href="http://www.oceanoptics.com/products/ADcables.asp">http://www.oceanoptics.com/products/ADcables.asp</a>
USB-CBL-1	USB Cable to connect ADC1000-USB to USB port on desktop or notebook PC	<a href="http://www.oceanoptics.com/products/ADcables.asp">http://www.oceanoptics.com/products/ADcables.asp</a>



# Appendix 1 – Specifications

## ADC1000-USB Specifications

Dimensions:	105.83 mm x 104.9 mm x 40.9 mm
Weight:	230 g
Power consumption:	150 mA @ 5 VDC
Board architecture/design:	USB and RS-232 interface external A/D board
Sampling frequency:	1 MHz (maximum)
Integration time:	3 milliseconds to 60 seconds
Data transfer rate:	Via USB port, full scans (2048 wavelengths) into memory every 13 ms; Via RS-232, full scans into memory every 300 ms
A/D resolution/channels:	12-bit/8 channels
Operating systems:	Windows 98/Me/2000/XP when using USB port on desktop or notebook PCs Any Windows 32-bit operating system when using the serial port on desktop or notebook PCs Windows CE 2.11 and above when using the serial port on handheld PCs
Computer interface:	USB and RS-232; if interfacing the ADC1000-USB to a PC via the serial port, a serial cable and 5 VDC power supply are required
Interface cable:	Comes with cable for connecting the ADC1000-USB to a PC's USB port Serial cable required to connect the ADC1000-USB to PC's serial port
Spectrometer compatibility:	Supports all S2000 Spectrometers and S1024DW Spectrometers
Software compatibility:	Supports all 32-bit Ocean Optics software
Multiple-channel capability:	Up to eight spectrometer channels

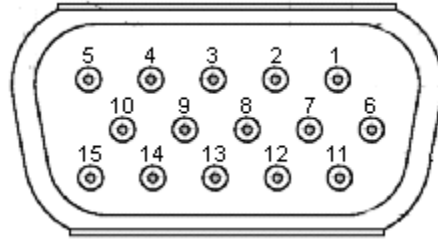
## Appendix A: Specifications

### Pinouts

The following section contains pinout information for 15-pin Accessory Connector pinouts and 9-pin Serial Connector pinouts:

#### 15-pin Accessory Connector Pinouts

When facing the 15-pin Accessory Connector on the ADC1000-USB, the pins are numbered as:

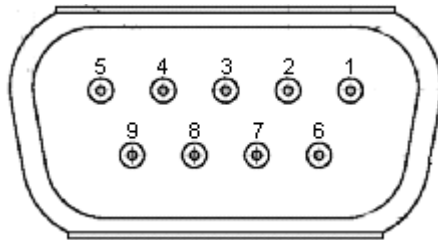


Pin #	Description
1	Single Strobe Output
2	Multiple Strobe Output
3	+5 VDC
4	External Hardware Trigger Input
5	External Synchronization Input
6	Analog Channel 7 Output
7	Analog Channel 6 Output
8	Software Trigger Input

Pin #	Description
9	Analog Channel 1 Output
10	Ground
11	Analog Channel 4 Output
12	Analog Channel 5 Output
13	Strobe/Lamp Enable TTL Output
14	Analog Channel 3 Output
15	Analog Channel 2 Output

#### 9-pin Serial Connector Pinouts

When facing the 9-pin Serial Connector on the ADC1000-USB, the pins are numbered as:



Pin #	Description
1	NC
2	Transmit
3	Receive

Pin #	Description
4	NC
5	Ground
6	Receive

Pin #	Description
7	NC
8	NC
9	NC

# Index

---

- 1**
- 15-pin, 23
- 9**
- 9-pin, 23
- A**
- A/D Interface, 12  
A/D Interface Tab, 6  
Accessories, 21  
Accessory Connector, 23  
ADC-USB-SER, 1, 21  
Appendix 1, 22
- D**
- Data Acquisition, 7  
    Configure - Serial, 13  
Device Driver Installation, 16
- I**
- Interface Options, 1
- O**
- OOIBase32, 4  
    Configure - Serial, 10  
    Configure - USB, 4  
    Old Version, 19  
    Parameters - USB, 6  
    Parameters -Serial, 13  
Operating System Requirements, 1  
Overview, 1  
    Serial Port, 9
- P**
- Pinouts, 23
- R**
- Recommended Accessories, 21
- S**
- Serial Connector, 23  
Serial Port, 2  
    Number, 20  
Specifications, 22  
Spectrometer, 5  
    Configure - USB, 5  
Spectrometer Configuration Screen, 5, 12  
Spectroscopic Accessories, 21  
Synchronization, 19
- T**
- Troubleshooting, 16
- U**
- USB Port, 2  
    Overview, 3, 15  
USB-CBL-1, 21
- W**
- Wavelength Calibration Coefficients - Serial, 14  
Wavelength Calibration Coefficients - USB, 7  
Wavelength Calibration Tab, 6