

Engineering Note

Topic: Installing Unsigned Device Drivers on Microsoft Windows® 8
Product Affected: SpectraSuite, OceanView, OmniDriver, SPAM Software
Date Issued: 11/04/2013

Description

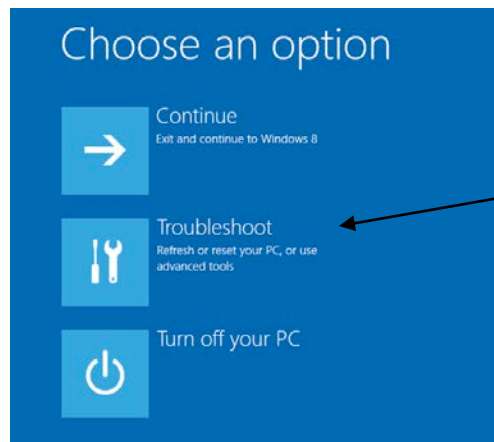
Windows 8 has a “driver signature enforcement” feature that is enabled by default. Not all of Ocean Optics spectrometer drivers are signed. When you try to install an unsigned driver, an error message appears: **The third party INF does not contain digital signature information.**

Disabling the Driver Enforcement Feature

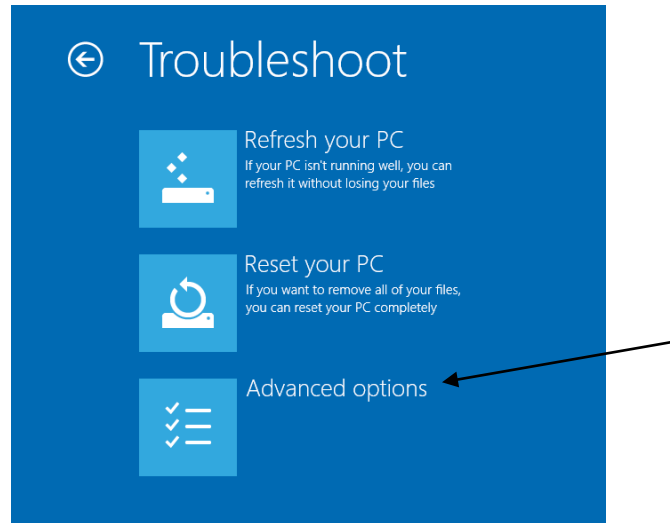
To allow the driver to be installed, the driver signature enforcement feature must be disabled as follows:

► Procedure

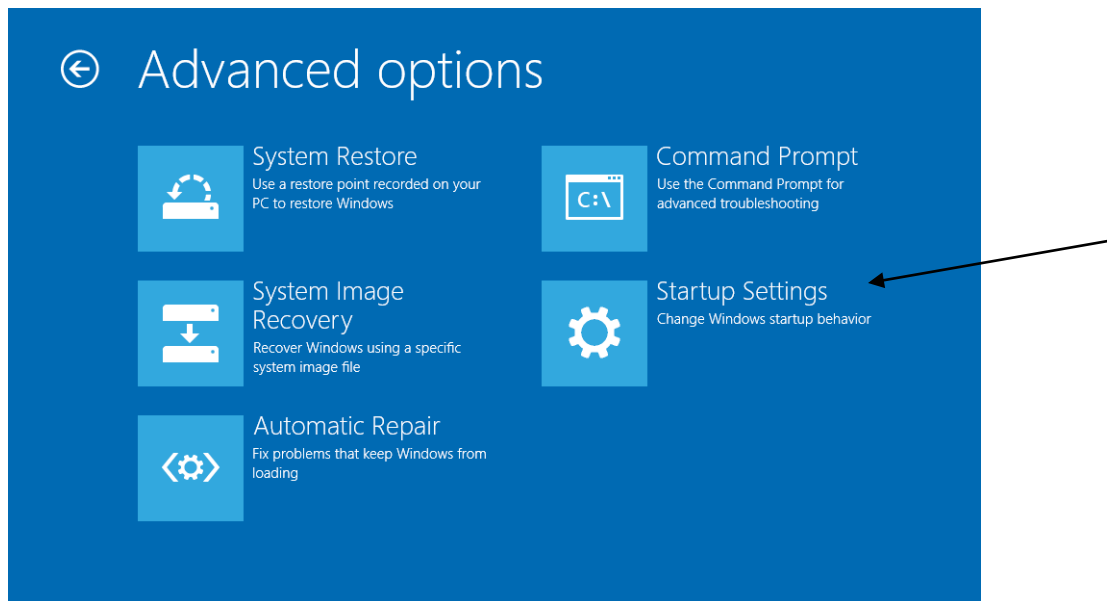
1. In Windows 8, click the **Power** button to get to its menu.
2. Press and hold the **Shift** key and click **Restart**. The **Choose an option** screen appears.
3. Select **Troubleshoot**.



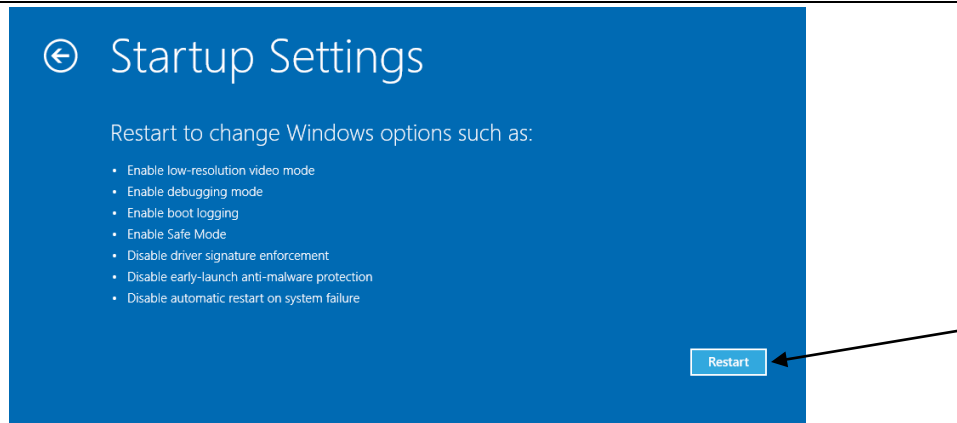
4. Select **Advanced Options**.



5. Select **Startup Settings**.



6. Click the **Restart** button.



7. After the PC restarts, select item (7) **Disable driver signature enforcement**. You should now be able to install the Windows device driver successfully.

If the driver does not install successfully (typically on a 64-bit operating system), then follow the procedure below.

Device Driver Installation for 64-bit Windows

When you install the 64-bit Windows version of SpectraSuite, OceanView, OmniDriver or SPAM, the driver installation works a little differently for some spectrometers.

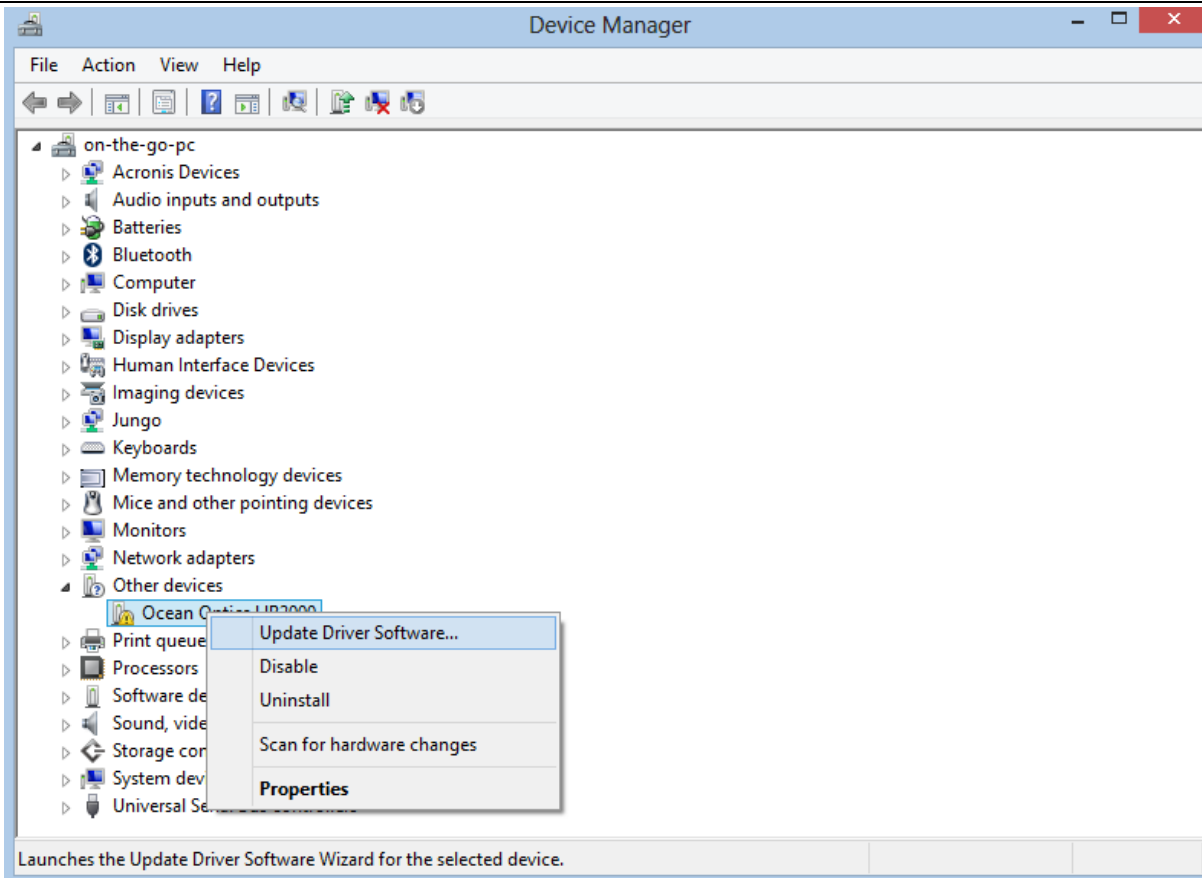
After you install your spectrometer operating software, attach your spectrometer to the computer. The Windows Found New Hardware wizard then opens, but may not find the device driver.

► **Procedure**

To install the device driver,

1. Go to Device Manager and find the **Ocean Optics spectrometer** (it should be under the category **Other Devices**).
2. Right-click on **Ocean Optics spectrometer** and select **Update Driver Software**. You have the choice of finding the driver automatically or browse.

Installing Unsigned Device Drivers on Windows 8



3. Select **Browse** and then browse to the directory: **C:\Program Files\Ocean Optics**.
4. Click **OK** and then **Next**.

NOTE: You may get the message **Windows cannot verify the publisher**. Click on **Install Anyway**.

The device driver installation starts. The message **Your hardware was installed successfully** appears when finished.